

Products

Long Range Laser PTZ Camera

PTZH-5085/5045/
9025/6825/5025



2MP~8MP



50~90X



Smart Event



Starlight



Laser IR

- › Max 19–275mm HD IR-Corrected Zoom Lens
- › 2MP, 4MP, 5MP or 8MP High-Resolution CMOS Sensor
- › HD Lens with 50X, 68X or 90X Optical Zoom
- › 640×480 12μm uncooled Thermal Imager
- › Numerous Thermal Lens and Sensor Options Available
- › 7.5° to 37° Thermal HFOV, Depending on Lens and Sensor
- › Optional Laser Illumination for up to 2.5km of High Definition Imaging in Complete Darkness
- › Endless 360° Rotation Pan/Tilt with Speeds from 0.01–90°/s
- › Rugged IP66 and -40° to +65°C with Anti-Corrosion Finish
- › Integrated Optical Fog Filter on select models

Application Scenarios

Most of Security & Surveillance projects. To security the Coast, and Sea plane. Some National defense equipment. Forest Fire Detection; Unmanned Aerial Vehicle, Fixed-wing aircraft. Peak point, need to security full Area. Medical Device with low time zoom. Most of Safe City Projects.

Optional Features:

- › 5km Laser Rangefinder
- › 640×480, 1280×1024 HD Cooled Thermal
- › HD SWIR Camera
- › GPS for Accurate Positioning
- › Gyro Stabilization
- › Many Other Customizations Available

8MP 50x **Laser** PTZ Camera

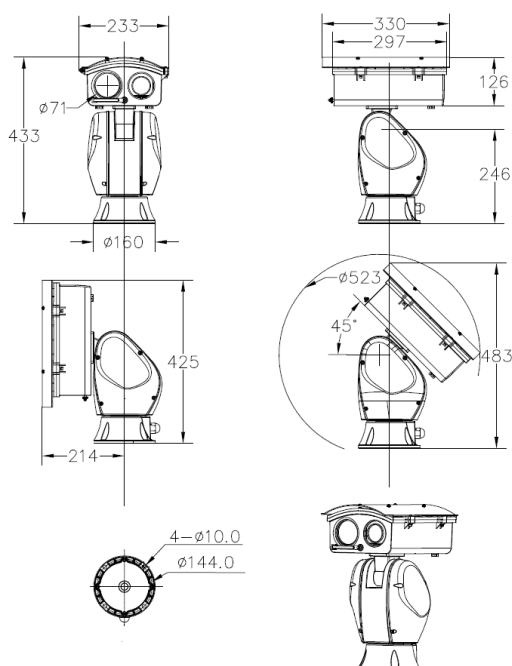
FTD-PTZH-5085



Specification

Camera	
Max. Resolution	3840x2160
Image Sensor	1/1.8" Sony progressive scan CMOS
Min. Illumination	Color: 0.0005 Lux @ (F1.4, AGC ON), B/W: 0.0001 Lux@(F1.4, AGC ON), 0 Lux with IR
Shutter Speed	1/3 s to 1/30000 s
Day & Night	IR cut filter
Zoom	50x optical, 16x digital
Lens	
Focal Length	6.0mm ~ 300mm
FOV	Horizontal field of view: 63.39° ~ 1.74°
Aperture	F1.4-F4.7
Focus	Auto, semi-auto, manual
Close Focus Distance	0.1m ~ 1.5m (Wide ~ Tele)
Illuminator	
Supplement Light Type	Laser
Supplement Light Range	Laser Distance: up to 3000 m
PTZ	
Movement Range (Pan)	360°
Movement Range (Tilt)	-45° to 90° (auto flip)
Pan Speed	Pan speed: configurable from 0.1° to 100°/s; preset speed: 100°/s
Tilt Speed	Tilt speed: configurable from 0.1° to 50°/s; preset speed 50°/s
Presets	250
Patrol Scan	8 patrols, up to 32 presets for each patrol
Pattern Scan	4 pattern scans
Scheduled Task	Preset, pattern scan, patrol scan, auto scan, tilt scan, random scan
Video	
Main Stream	Main Stream: 30/25fps(3840x2160); 1080P@25/30fps; 720P@25/30fps
Streaming	Triple Streaming
Video Compression	H.265/H.264+/H.264
Video Bit Rate	32 kbps to 16384 kbps
Region of Interest (ROI)	4 fixed regions for each stream
Audio	
Video Bit Rate	32kMbps ~ 16Mbps
Audio Compression	AAC/MP2L2
Network	
Network Storage	NAS
Protocols	ONVIF, GB28181 IPv4/IPv6, HTTPs, HTTP, RTSP, RTP, TCP, UDP, PPPoE, DDNS, TCP/IP, SNMP, QoS, 802.1x, Bonjour, FTP
User/Host	Up to 20 users, 3 user levels: administrator, Onvif user, and online user
Security	Password protection, complicated password, HTTPS encryption,
Web Browser	IE11, Chrome 57+, Firefox 52+
Image	
Day/Night Switch	Day, Night, Auto, Schedule
Image Enhancement	BLC, HLC, 3D DNR
WDR	120 dB
Defog	Optical Defog
Exposure Model	Auto/Manual/Aperture Priority/Shutter Priority/Gain Priority
S/N Ratio	≥ 55dB (AGC Off, Weight ON)
Image Stabilization	Electronical Image Stabilisation (EIS)
Image Settings	Saturation, brightness, contrast, sharpness, gain, and white balance adjustable by client software or web browser
Interface	
Ethernet Interface	1 RJ45 10M/100M self-adaptive Ethernet port
On-board Storage	Built-in memory card slot, support microSD up to 256 GB
Alarm	1 inputs, 1 output
Audio	1 input (line in), max. 1 output (line out)
Event	
Basic Event	Motion detection, video tampering alarm, alarm input and output
Smart Event	Line Crossing, Area Intrusion, Unattended Object, Object Missing, Region Entrance, Region Exiting, Fast Moving, Human Detection, Vehicle Detection
Alarm Linkage	Email, Snapshot, Recording, Alarm Out
General	
Power	24 VAC/6A, max. 98 W (including max. 88W/98W IR) 802.3bt (PoE++)
Operating Condition	-40°C to 60 °C. Humidity 90% or less (non-condensing)
Dimension	L330.0mm×W233.0mm×H483mm
Weight	Approx. 8 kg
Protection	IP66, IK10, TVS 4000V lightning protection, surge protection and voltage transient protection
Wiper	Support

DIMENSIONS (Unit - mm)



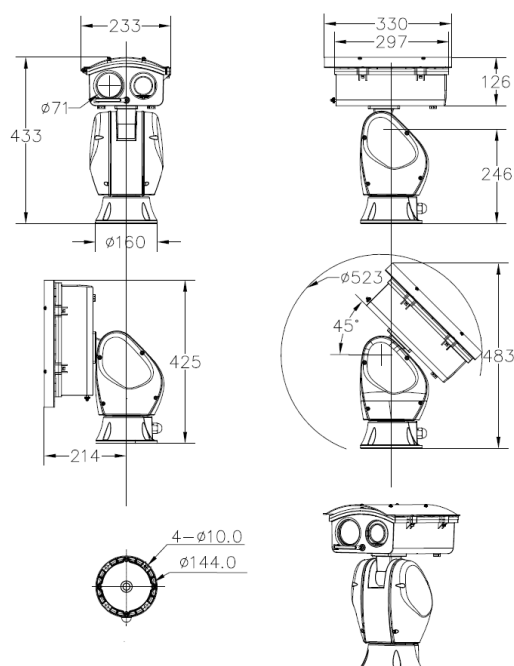
4MP 50x **Laser** PTZ Camera

FTD-PTZH-5045

Specification

Camera	
Max. Resolution	2688x1520
Image Sensor	1/1.8" Sony progressive scan CMOS
Min. Illumination	Color: 0.0005 Lux @ (F1.4, AGC ON), B/W: 0.0001 Lux@(F1.4, AGC ON), 0 Lux with IR
Shutter Speed	1/3 s to 1/30000 s
Day & Night	IR cut filter
Zoom	50x optical, 16x digital
Lens	
Focal Length	6.0mm ~ 300mm
FOV	Horizontal field of view: 63.39° ~ 1.74°
Aperture	F1.4-F4.7
Focus	Auto, semi-auto, manual
Close Focus Distance	0.1m ~ 1.5m (Wide ~ Tele)
Illuminator	
Supplement Light Type	Laser
Supplement Light Range	Laser Distance: up to 3000 m
PTZ	
Movement Range (Pan)	360°
Movement Range (Tilt)	-45° to 90° (auto flip)
Pan Speed	Pan speed: configurable from 0.1° to 100°/s; preset speed: 100°/s
Tilt Speed	Tilt speed: configurable from 0.1° to 50°/s, preset speed 50°/s
Presets	250
Patrol Scan	8 patrols, up to 32 presets for each patrol
Pattern Scan	4 pattern scans
Scheduled Task	Preset, pattern scan, patrol scan, auto scan, tilt scan, random scan
Video	
Main Stream	Main Stream: 30/25fps (2688x1520); 1080P@25/30fps; 720P@25/30fps
Streaming	Triple Streaming
Video Compression	H.265/H.264+/H.264
Video Bit Rate	32 kbps to 16384 kbps
Region of Interest (ROI)	4 fixed regions for each stream
Audio	
Video Bit Rate	32kMbps ~ 16Mbps
Audio Compression	AAC/MP2L2
Network	
Network Storage	NAS
Protocols	ONVIF, GB28181 IPv4/IPv6, HTTPs, HTTP, RTSP, RTP, TCP, UDP, PPPoE, DDNS, TCP/IP, SNMP, QoS, 802.1x, Bonjour, FTP
User/Host	Up to 20 users, 3 user levels: administrator, Onvif user, and online user
Security	Password protection, complicated password, HTTPS encryption,
Web Browser	IE11, Chrome 57+, Firefox 52+
Image	
Day/Night Switch	Day, Night, Auto, Schedule
Image Enhancement	BLC, HLC, 3D DNR
WDR	120 dB
Defog	Optical Defog
Exposure Model	Auto/Manual/Aperture Priority/Shutter Priority/Gain Priority
S/N Ratio	≥ 55dB (AGC Off, Weight ON)
Image Stabilization	Electronical Image Stabilisation (EIS)
Image Settings	Saturation, brightness, contrast, sharpness, gain, and white balance adjustable by client software or web browser
Interface	
Ethernet Interface	1 RJ45 10M/100M self-adaptive Ethernet port
On-board Storage	Built-in memory card slot, support microSD up to 256 GB
Alarm	1 inputs, 1 output
Audio	1 input (line in), max. 1 output (line out)
Event	
Basic Event	Motion detection, video tampering alarm, alarm input and output
Smart Event	Line Crossing, Area Intrusion, Unattended Object, Object Missing, Region Entrance, Region Exiting, Fast Moving, Human Detection, Vehicle Detection
Alarm Linkage	Email, Snapshot, Recording, Alarm Out
General	
Power	24 VAC/6A, max. 98 W (including max. 88W/98W IR) 802.3bt (PoE++)
Operating Condition	-40°C to 60 °C. Humidity 90% or less (non-condensing)
Dimension	L330.0mm×W233.0mm×H483mm
Weight	Approx. 8 kg
Protection	IP66, IK10, TVS 4000V lightning protection, surge protection and voltage transient protection
Wiper	Support

DIMENSIONS (Unit - mm)



2MP 90x **Laser** PTZ Camera

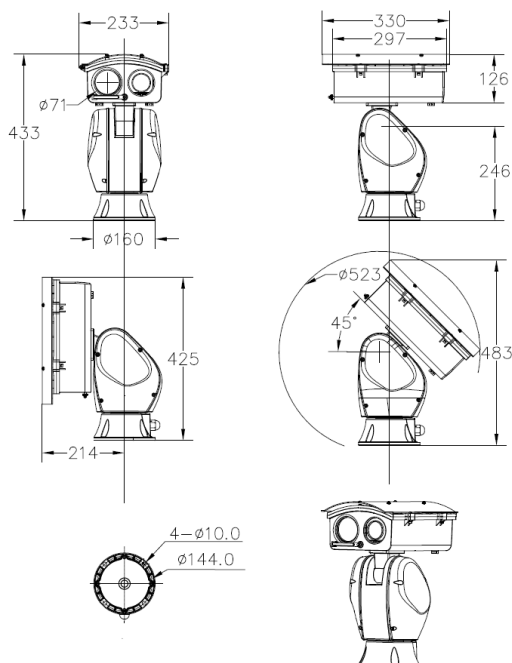
FTD-PTZH-9025



Specification

Camera	
Max. Resolution	1920*1080
Image Sensor	1/1.8" Sony progressive scan CMOS
Min. Illumination	Color: 0.0005 Lux @ (F1.4, AGC ON), B/W: 0.0001 Lux@(F1.4, AGC ON), 0 Lux with IR
Shutter Speed	1/3 s to 1/30000 s
Day & Night	IR cut filter
Zoom	90x optical, 16x digital
Lens	
Focal Length	6.0mm ~ 540mm
FOV	Horizontal field of view: 63.39° ~ 1.74°
Aperture	F1.4-F4.7
Focus	Auto, semi-auto, manual
Close Focus Distance	0.1m ~ 1.5m (Wide ~ Tele)
Illuminator	
Supplement Light Type	Laser
Supplement Light Range	Laser Distance: up to 3000 m
PTZ	
Movement Range (Pan)	360°
Movement Range (Tilt)	-45° to 90° (auto flip)
Pan Speed	Pan speed: configurable from 0.1° to 100°/s; preset speed: 100°/s
Tilt Speed	Tilt speed: configurable from 0.1° to 50°/s; preset speed 50°/s
Presets	250
Patrol Scan	8 patrols, up to 32 presets for each patrol
Pattern Scan	4 pattern scans
Scheduled Task	Preset, pattern scan, patrol scan, auto scan, tilt scan, random scan
Video	
Main Stream	Main Stream: 1080P@25/30fps; 720P@25/30fps
Streaming	Triple Streaming
Video Compression	H.265/H.264+/H.264
Video Bit Rate	32 kbps to 16384 kbps
Region of Interest (ROI)	4 fixed regions for each stream
Audio	
Video Bit Rate	32kMbps ~ 16Mbps
Audio Compression	AAC/MP2L2
Network	
Network Storage	NAS
Protocols	ONVIF, GB28181 IPv4/IPv6, HTTPs, HTTP, RTSP, RTP, TCP, UDP, PPPoE, DDNS, TCP/IP, SNMP, QoS, 802.1x, Bonjour, FTP
User/Host	Up to 20 users, 3 user levels: administrator, Onvif user, and online user
Security	Password protection, complicated password, HTTPS encryption,
Web Browser	IE11, Chrome 57+, Firefox 52+
Image	
Day/Night Switch	Day, Night, Auto, Schedule
Image Enhancement	BLC, HLC, 3D DNR
WDR	120 dB
Defog	Optical Defog
Exposure Model	Auto/Manual/Aperture Priority/Shutter Priority/Gain Priority
S/N Ratio	≥ 55dB (AGC Off, Weight ON)
Image Stabilization	Electronical Image Stabilisation (EIS)
Image Settings	Saturation, brightness, contrast, sharpness, gain, and white balance adjustable by client software or web browser
Interface	
Ethernet Interface	1 RJ45 10M/100M self-adaptive Ethernet port
On-board Storage	Built-in memory card slot, support microSD up to 256 GB
Alarm	1 inputs, 1 output
Audio	1 input (line in), max. 1 output (line out)
Event	
Basic Event	Motion detection, video tampering alarm, alarm input and output
Smart Event	Line Crossing, Area Intrusion, Unattended Object, Object Missing, Region Entrance, Region Exiting, Fast Moving, Human Detection, Vehicle Detection
Alarm Linkage	Email, Snapshot, Recording, Alarm Out
General	
Power	24 VAC/6A, max. 98 W (including max. 88W/98W IR) 802.3bt (PoE++)
Operating Condition	-40°C to 60 °C. Humidity 90% or less (non-condensing)
Dimension	L330.0mm×W233.0mm×H483mm
Weight	Approx. 8 kg
Protection	IP66, IK10, TVS 4000V lightning protection, surge protection and voltage transient protection
Wiper	Support

DIMENSIONS (Unit - mm)



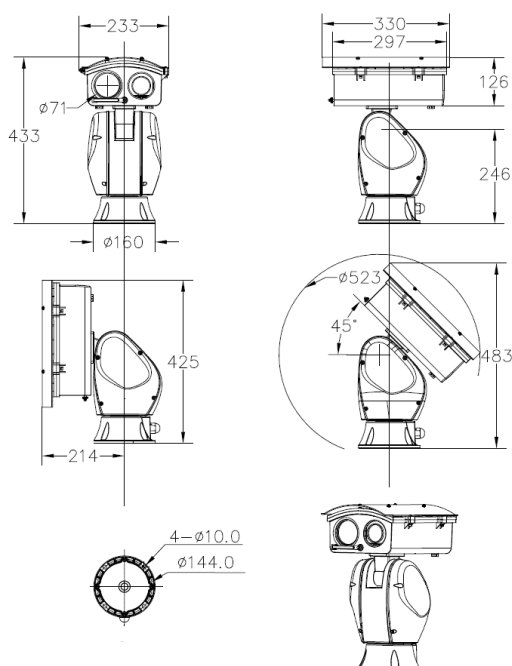
2MP 68x **Laser** PTZ Camera

FTD-PTZH-6825

Specification

Camera	
Max. Resolution	1920*1080
Image Sensor	1/1.8" Sony progressive scan CMOS
Min. Illumination	Color: 0.0005 Lux @ (F1.4, AGC ON), B/W: 0.0001 Lux@(F1.4, AGC ON), 0 Lux with IR
Shutter Speed	1/3 s to 1/30000 s
Day & Night	IR cut filter
Zoom	68x optical, 16x digital
Lens	
Focal Length	6.0mm ~ 408mm
FOV	Horizontal field of view: 63.39° ~ 1.74°
Aperture	F1.4-F4.7
Focus	Auto, semi-auto, manual
Close Focus Distance	0.1m ~ 1.5m (Wide ~ Tele)
Illuminator	
Supplement Light Type	Laser
Supplement Light Range	Laser Distance: up to 3000 m
PTZ	
Movement Range (Pan)	360°
Movement Range (Tilt)	-45° to 90° (auto flip)
Pan Speed	Pan speed: configurable from 0.1° to 100°/s; preset speed: 100°/s
Tilt Speed	Tilt speed: configurable from 0.1° to 50°/s; preset speed 50°/s
Presets	250
Patrol Scan	8 patrols, up to 32 presets for each patrol
Pattern Scan	4 pattern scans
Scheduled Task	Preset, pattern scan, patrol scan, auto scan, tilt scan, random scan
Video	
Main Stream	Main Stream: 1080P@25/30fps; 720P@25/30fps
Streaming	Triple Streaming
Video Compression	H.265/H.264+/H.264
Video Bit Rate	32 kbps to 16384 kbps
Region of Interest (ROI)	4 fixed regions for each stream
Audio	
Video Bit Rate	32kMbps ~ 16Mbps
Audio Compression	AAC/MP2L2
Network	
Network Storage	NAS
Protocols	ONVIF, GB28181 IPv4/IPv6, HTTPs, HTTP, RTSP, RTP, TCP, UDP, PPPoE, DDNS, TCP/IP, SNMP, QoS, 802.1x, Bonjour, FTP
User/Host	Up to 20 users, 3 user levels: administrator, Onvif user, and online user
Security	Password protection, complicated password, HTTPS encryption,
Web Browser	IE11, Chrome 57+, Firefox 52+
Image	
Day/Night Switch	Day, Night, Auto, Schedule
Image Enhancement	BLC, HLC, 3D DNR
WDR	120 dB
Defog	Optical Defog
Exposure Model	Auto/Manual/Aperture Priority/Shutter Priority/Gain Priority
S/N Ratio	≥ 55dB (AGC Off, Weight ON)
Image Stabilization	Electronical Image Stabilisation (EIS)
Image Settings	Saturation, brightness, contrast, sharpness, gain, and white balance adjustable by client software or web browser
Interface	
Ethernet Interface	1 RJ45 10M/100M self-adaptive Ethernet port
On-board Storage	Built-in memory card slot, support microSD up to 256 GB
Alarm	1 inputs, 1 output
Audio	1 input (line in), max. 1 output (line out)
Event	
Basic Event	Motion detection, video tampering alarm, alarm input and output
Smart Event	Line Crossing, Area Intrusion, Unattended Object, Object Missing, Region Entrance, Region Exiting, Fast Moving, Human Detection, Vehicle Detection
Alarm Linkage	Email, Snapshot, Recording, Alarm Out
General	
Power	24 VAC/6A, max. 98 W (including max. 88W/98W IR) 802.3bt (PoE++)
Operating Condition	-40°C to 60 °C. Humidity 90% or less (non-condensing)
Dimension	L330.0mm×W233.0mm×H483mm
Weight	Approx. 8 kg
Protection	IP66, IK10, TVS 4000V lightning protection, surge protection and voltage transient protection
Wiper	Support

DIMENSIONS (Unit - mm)



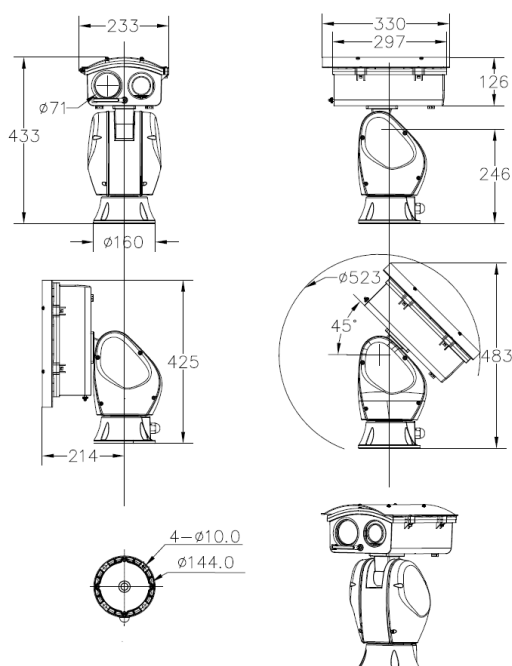
2MP 50x **Laser** PTZ Camera

FTD-PTZH-5025

Specification

Camera	
Max. Resolution	1920*1080
Image Sensor	1/1.8" Sony progressive scan CMOS
Min. Illumination	Color: 0.0005 Lux @ (F1.4, AGC ON), B/W: 0.0001 Lux@(F1.4, AGC ON), 0 Lux with IR
Shutter Speed	1/3 s to 1/30000 s
Day & Night	IR cut filter
Zoom	50x optical, 16x digital
Lens	
Focal Length	6.0mm ~ 300mm
FOV	Horizontal field of view: 63.39° ~ 1.74°
Aperture	F1.4-F4.7
Focus	Auto, semi-auto, manual
Close Focus Distance	0.1m ~ 1.5m (Wide ~ Tele)
Illuminator	
Supplement Light Type	Laser
Supplement Light Range	Laser Distance: up to 3000 m
PTZ	
Movement Range (Pan)	360°
Movement Range (Tilt)	-45° to 90° (auto flip)
Pan Speed	Pan speed: configurable from 0.1° to 100°/s; preset speed: 100°/s
Tilt Speed	Tilt speed: configurable from 0.1° to 50°/s, preset speed 50°/s
Presets	250
Patrol Scan	8 patrols, up to 32 presets for each patrol
Pattern Scan	4 pattern scans
Scheduled Task	Preset, pattern scan, patrol scan, auto scan, tilt scan, random scan
Video	
Main Stream	Main Stream: 1080P@25/30fps; 720P@25/30fps
Streaming	Triple Streaming
Video Compression	H.265/H.264+/H.264
Video Bit Rate	32 kbps to 16384 kbps
Region of Interest (ROI)	4 fixed regions for each stream
Audio	
Video Bit Rate	32kMbps ~ 16Mbps
Audio Compression	AAC/MP2L2
Network	
Network Storage	NAS
Protocols	ONVIF, GB28181 IPv4/IPv6, HTTPs, HTTP, RTSP, RTP, TCP, UDP, PPPoE, DDNS, TCP/IP, SNMP, QoS, 802.1x, Bonjour, FTP
User/Host	Up to 20 users, 3 user levels: administrator, Onvif user, and online user
Security	Password protection, complicated password, HTTPS encryption,
Web Browser	IE11, Chrome 57+, Firefox 52+
Image	
Day/Night Switch	Day, Night, Auto, Schedule
Image Enhancement	BLC, HLC, 3D DNR
WDR	120 dB
Defog	Optical Defog
Exposure Model	Auto/Manual/Aperture Priority/Shutter Priority/Gain Priority
S/N Ratio	≥ 55dB (AGC Off, Weight ON)
Image Stabilization	Electronical Image Stabilisation (EIS)
Image Settings	Saturation, brightness, contrast, sharpness, gain, and white balance adjustable by client software or web browser
Interface	
Ethernet Interface	1 RJ45 10M/100M self-adaptive Ethernet port
On-board Storage	Built-in memory card slot, support microSD up to 256 GB
Alarm	1 inputs, 1 output
Audio	1 input (line in), max. 1 output (line out)
Event	
Basic Event	Motion detection, video tampering alarm, alarm input and output
Smart Event	Line Crossing, Area Intrusion, Unattended Object, Object Missing, Region Entrance, Region Exiting, Fast Moving, Human Detection, Vehicle Detection
Alarm Linkage	Email, Snapshot, Recording, Alarm Out
General	
Power	24 VAC/6A, max. 98 W (including max. 88W/98W IR) 802.3bt (PoE++)
Operating Condition	-40°C to 60 °C. Humidity 90% or less (non-condensing)
Dimension	L330.0mm×W233.0mm×H483mm
Weight	Approx. 8 kg
Protection	IP66, IK10, TVS 4000V lightning protection, surge protection and voltage transient protection
Wiper	Support

DIMENSIONS (Unit - mm)



ABOUT FENGTAIDA

Fengtaida is a pioneering and forward-looking manufacturer founded in 2009 in Shenzhen. We are a leading global provider of custom embedded ptz systems and custom Autofocus-zoom block camera and thermal image camera. In addition to our abilities in designing custom ptz system hardware, our software development expertise and our experience in efficient prototyping and manufacturing, we are supported by private custom housing and configuration capabilities and extensive testing facilities to provide a one-stop-shop for system design and build.

Skills and Capabilities at Fengtaida

System / Hardware design skills and capabilities

System level design

- ✓ Definition of the architecture, the logical and the physical design of the ptz cameras
- ✓ 3D mechanical design

Schematics & PCB design

- ✓ Component selection and optimal solution
- ✓ High-speed camera designs
- ✓ PCB board for ptz system
- ✓ Autofocus-zoom block camera
- ✓ multiple video output options

Prototyping

- ✓ Fast turn-around on PCB and assembly prototyping
- ✓ Fast turn-around on prototyping for mechanical parts
- ✓ Scale modelling using CAD data e.g. 3D printing (Rapid Prototyping)

Software development and applications

- ✓ Optical zoom modules system software
- ✓ optimal solution API design and implementation
- ✓ Application software for custom embedded systems
- ✓ Modification of firmware to suit specific applications
- ✓ Customized video Artificial intelligence Behavior analysis

Manufacturing, testing and supply chain management

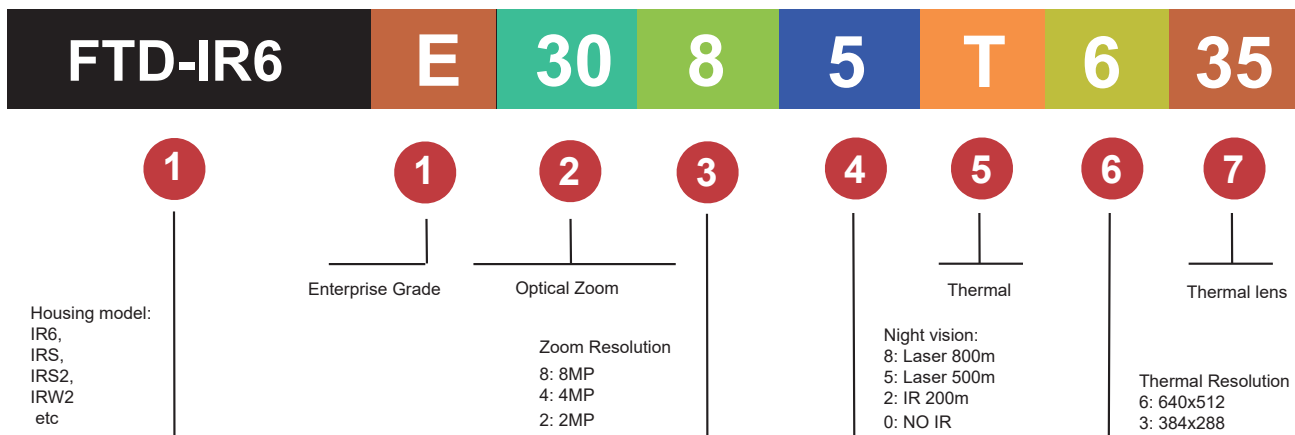
- ✓ Manufacturing of ptz cameras
- ✓ Inspection of each step and final system assembly
- ✓ Thorough testing of the final products managed
- ✓ Additional specialist test facilities
- ✓ Supply chain management and stock holding of all components



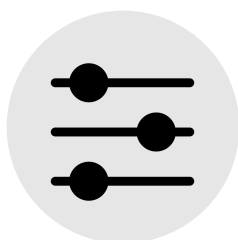
Navy Blue: Do things rigorously and rationally

Orange: Do things Passionately

ABOUT MODEL NAME



WHY CHOOSE US



Customized

Customization enables easier integration into your security system and brings the ability to add custom functionality that is unique to your system.



Cybersecurity

To ensure a fully managed and secure end-to-end cybersecurity solution, Partners have full control product.



2 Year Warranties

We back our camera with a 2-year warranty for hardware.



ISO9001:2015

It helps products to improve performance and follow the globally recognized standard



Onvif Profile

ONVIF Profile S, T, M and G compliance allows for easy integration with third-party cameras and VMS